

• EMBICON GROUP CLIENTS •

Govt. Sector



Energy Sector



Metal Sector



Chemical & Sugar Sector



Cement, Building & Mine Sector



Food & Process Industries Sector



Port & Engineering Sector



Forge, Cast & Alloys Sector



EMBICON
GROUP OF COMPANIES



Let's Make Machine Talk

Industrial Automation
Solution Provider



Let's move safe

EOT Crane
Manufacturer



Industry 4.0 IOT,
IT Solution Provider

EMBICON

H.O. : RK Industrial Area, Swati Park, Kotharia, Rajkot - 04, Gujarat (India) | Factory : Piplana, Rajkot
IT Office : South 405, Twin Star, 150 Feet Ring Road, Rajkot | Branch : Baroda, Hyderabad, Pune
sales@embicon.in | www.embicon.in | 9328941547 | 9374877348 | 9998270747

EMBICON

Our Group of Companies



Let's Make Machine Talk

Industrial Automation
Solution Provider



Let's move safe

EOT Crane
Manufacturer



Industry 4.0 IOT,
IT Solution Provider

- SCADA SOLUTION
- PLC CONTROL PANELS
- ROBOTICS
- VISION SYSTEM
- ENERGY MANAGEMENT

- INDUSTRIAL CRANE
- ELECTRICAL HOIST
- CRAB
- CRANE BRAKES
- ELECTRIFICATION SYSTEM
- CRANE KIT

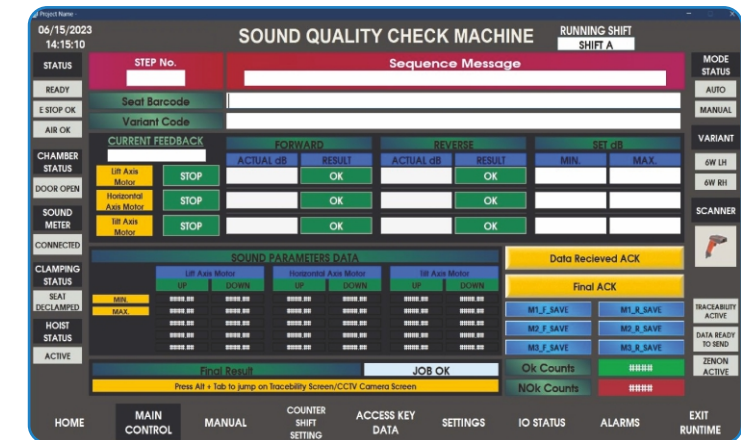
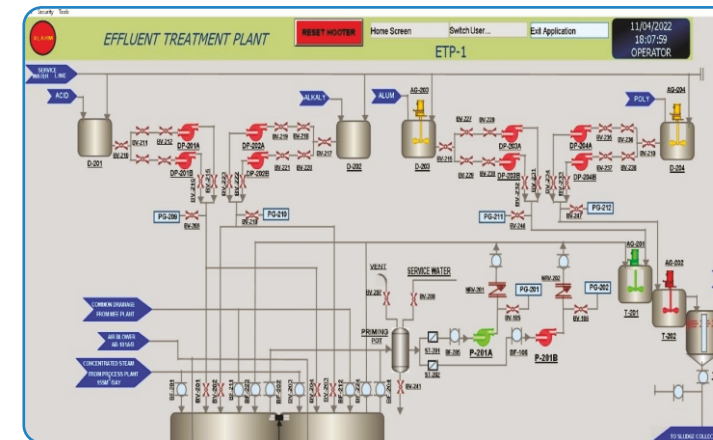
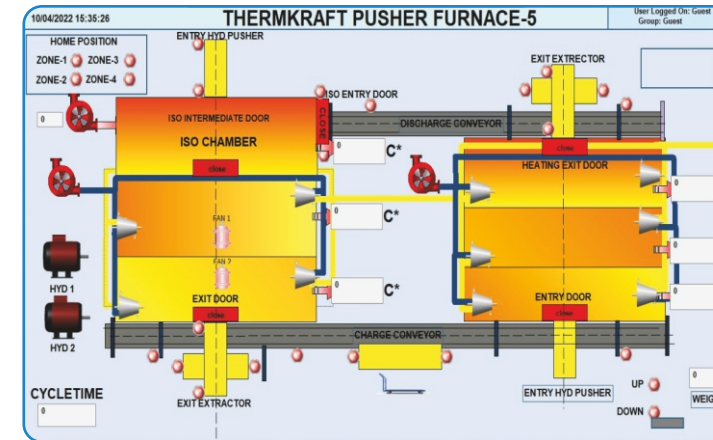
- CUSTOMIZED ERP
- SMART FACTORY SOLUTION
- INDUSTRY 4.0 SOLUTION
- ASSET MANAGEMENT SOLUTION
- WEB/APP/CUSTOM DEVELOPMENT
- SOFTWARE CONSULTANT

Embicon is a group of companies with innovation and simplicity at its core. Embicon has been delivering a multitude of smart industrial solutions such as Automation systems, Industrial IOT & IT applications and EOT Crane. We believe in advancing the simplest solutions in the most creative way possible.

We are experienced professional engineers who have wide experienced in different sectors. We bring in vast technical and innovative knowledge aiming at the cost, productivity, safety and quality of the engineering project and information-operational technologies for the clients. As a growing engineering, automation and industry 4.0 systems integrator, our mission is to deliver an outstanding suite of services worldwide. Our design work and project management skills are backed by our unparalleled technical advice and customer support.

EMBICON TECH HUB

SCADA



- CUSTOMIZED GUI
- ERP INTEGRATION
- SCADA DESIGNING
- WEB BASED SCADA
- REMOTE MONITORING
- FLOOR SHOP MANAGEMENT
- ALARM MANAGEMENT SYSTEM



SERVING INDUSTRIES
SINCE 2013



PLC OPERATED PANEL

- Customized PLC Panels
- Expert PLC Programming
- PLC Spares



ROBOTICS

- Industrial Robotics
- Robotic Process Automation (RPA)
- Robot Integration



VISION SYSTEM

- Quality Inspection
- Dimensional Measurement
- Object Recognition

INDUSTRIAL AUTOMATION



VFD CONTROL PANEL

- Support in Various Brands
- VFD Control Panels
- VFD Spares



SMART ENERGY SOLUTION

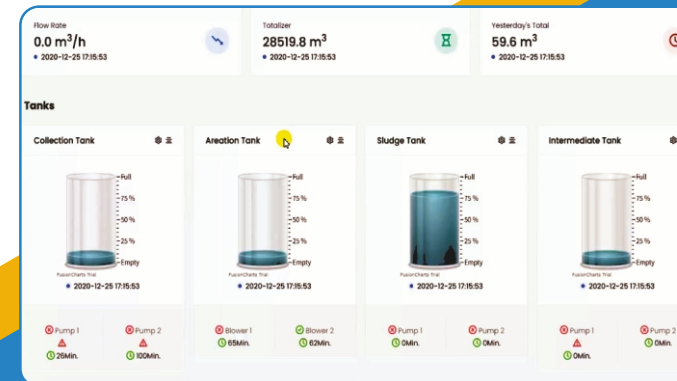
- Advanced Energy Metering Solutions
- Real-Time Data Analysis
- Customized Solutions



INDUSTRY 4.0 IOT

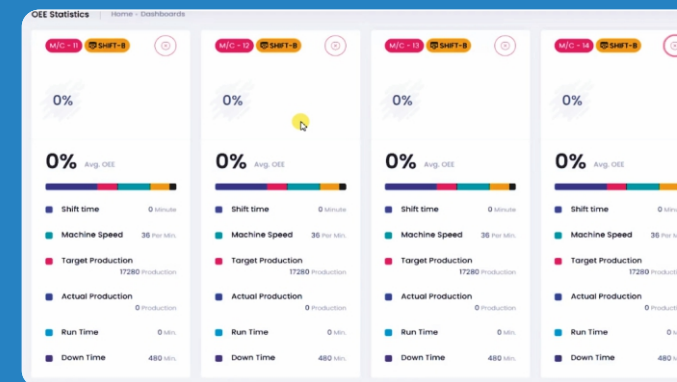
IOT GATEWAY

- VPN pass through for PLC Remote Debugging
- Cloud Mode with MQTT
- Remote Debugging, Web SCADA, API Interface, App Monitoring.



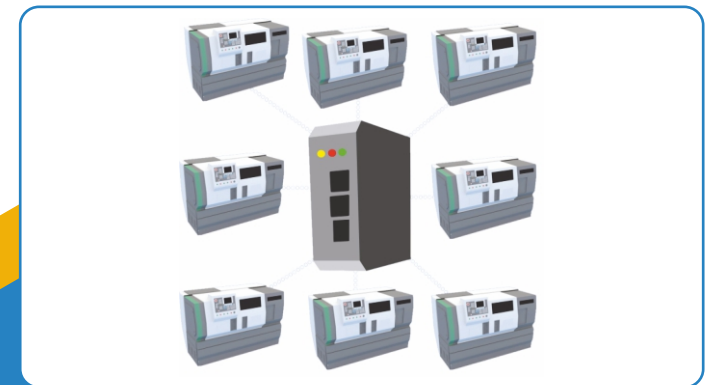
Furnace IOT Solution

- Real-time Monitoring of Plant Data
- Temperature
- Profile controlling Data setup
- Reports



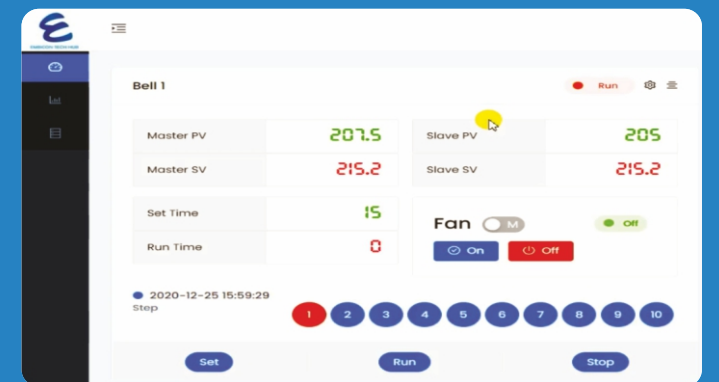
Online Data Monitoring / Energy Meter Solution

- Real-time / Historical Monitoring
- Historical Trends
- Analytical data Reports
- Alarm Management and trigger signals



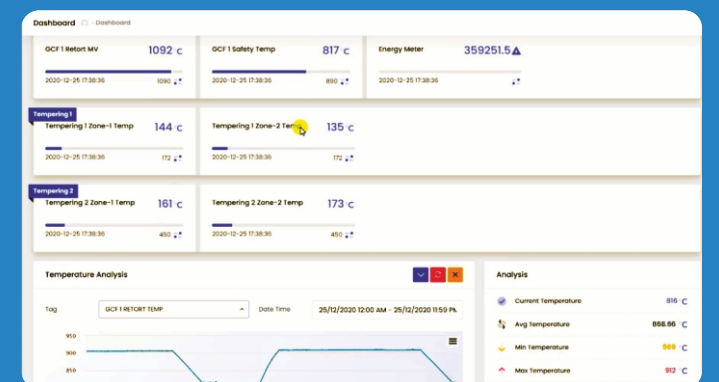
STP PLANT

- Real-time Monitoring of Plant Data
- Motor Runtime/Trip alert
- Flow meter Real-time/Historical Data
- Energy utilization



Floor Shop Management

- Real-time Status of Process/Machine
- Machine OEE • Runtime/Down Time
- Production target /Achieve Data
- Reports / Historical Trends





Let's move safe

Embicon Industries Pvt. Ltd.

Material Handling Solutions

HOIST & CRAB

- WIRE ROPE HOIST
- TROLLEY CRAB
- CHAIN HOIST
- GEAR TROLLEY

BRAKING SYSTEM

- THRUSTER BRAKE
- SOLENOID BRAKE
- DISC BRAKE
- EM BRAKE

CONTROL PANEL

- AC DRIVE
- SWITCH GEAR
- PLC SYSTEM

LT GANTRY

END CARRIAGE SYSTEM

- GEAR MOTOR
- GEAR & PINION SET
- LT WHEEL

FESTOON SYSTEM

- C RAIL FESTOON SYSTEM
- CABLE TROLLEY SYSTEM
- CABLE CARRIER SYSTEM

MONITORING SYSTEM

- CRANE SCADA
- CRANE SCALE
- DATA LOGGING

PROTECTION SYSTEM

- LIMIT SWITCH
- ANTI COLLISION DEVICE

ELECTRIFICATION SYSTEM

- DSL BUSBAR SYSTEM
- ENCLOSED BUSBAR SYSTEM
- ANGLE IRON BUSBAR SYSTEM

CONTROL SYSTEM

- PUSH BUTTON PENDANT STATION
- RADIO REMOTE CONTROL
- MASTER CONTROLLER



SINGLE GIRDER EOT CRANE



DOUBLE GIRDER EOT CRANE



UNDER SLUG EOT CRANE

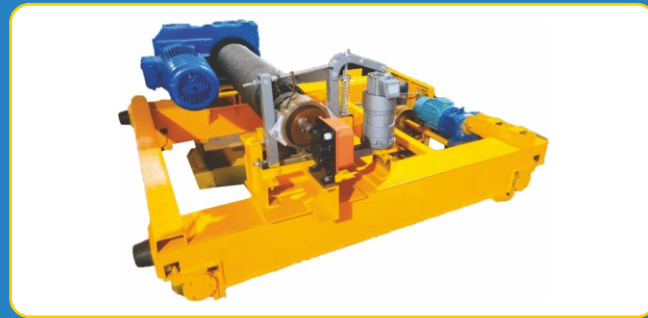


JIB CRANE

• ELECTRICAL HOISTS & CRAB •



WIRE ROPE HOIST



WIRE ROPE HOIST CRAB

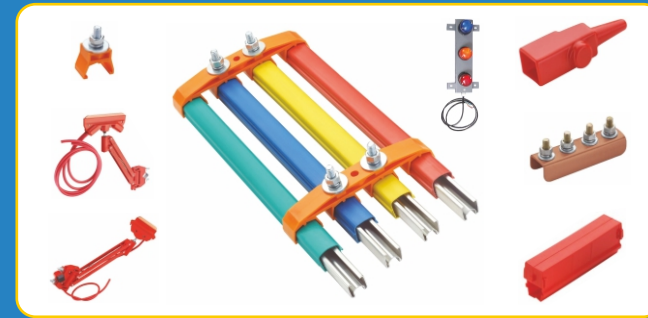


ELECTRICAL CHAIN HOIST

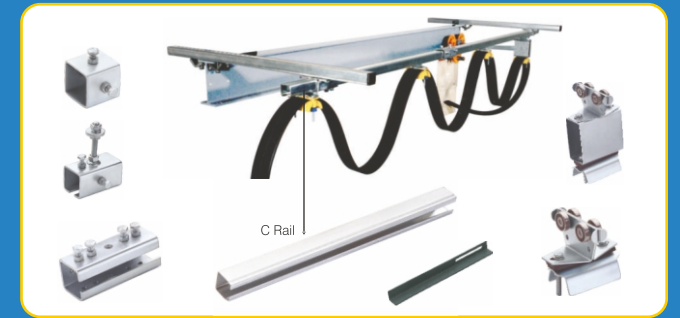


CHAIN PULLEY BLOCK

• CRANE ELECTRIFICATION SYSTEM •



DSL BUSBAR



FESTOON SYSTEM



CABLE REELING DRUM

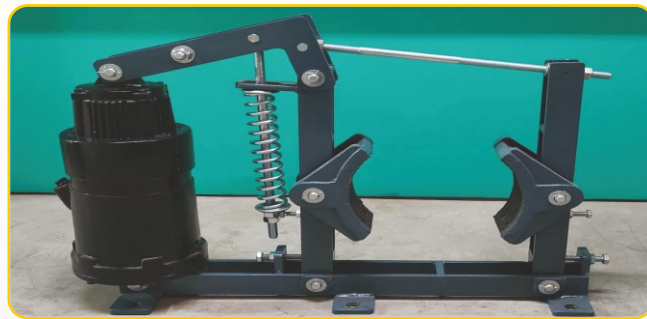


MASTER CONTROLLER



RESISTANCE BOX

• CRANE BRAKES •



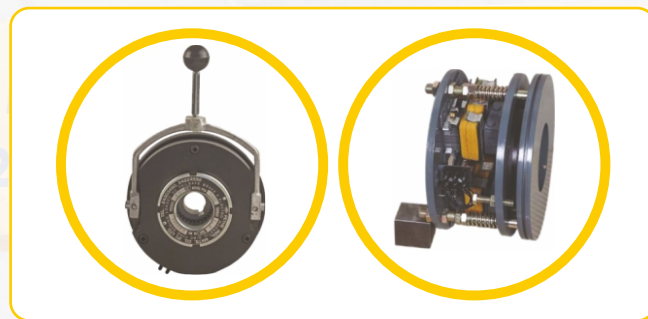
THRUSTER BRAKE



ELECTRO HYDRAULIC THRUSTER



AC SOLENOID / SLDC BRAKE



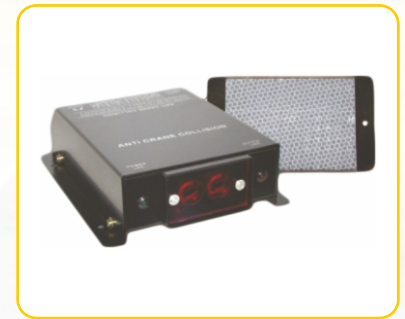
EM / DISC BRAKE

• CONTROL EQUIPMENTS •

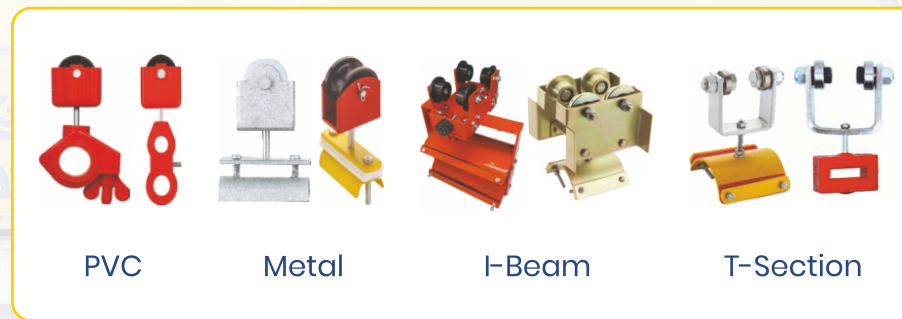


Rotary Gear Lever Type Counter Weight Worm Drive

CRANE LIMIT SWITCH



ANTI COLLISION DEVICES



PVC Metal I-Beam T-Section

CABLE CARRIER / TROLLEY



CONTROL STATION



CUSTOMIZED ERP

- Designed to Meet Unique Business Needs
- Streamlined Work Flows and Processes
- Seamless Integration With Existing Systems
- Scalable to Accommodate Growth
- Training and Support



SMART FACTORY SOLUTION

- Predictive Maintenance
- Floor Shop Management
- Production Optimization
- Workflow Automation
- Adaptive Manufacturing
- Real-time Data Access and Analytics



INDUSTRY 4.0 SOLUTION

- IoT Integration
- Realtime Integration
- Cloud Computing
- Data Analytics
- AI and Machine Learning



ASSET MANAGEMENT SOLUTION

- Asset Tracking
- Maintenance Scheduling
- Inventory Management
- Condition Monitoring
- Performance Analysis



WEB/APP CUSTOM DEVELOPMENT

- Custom Web Application Development
- Custom Mobile App Development (iOS/Android)
- Responsive Web Design
- User Interface (UI) Design
- User Experience (UX) Design



CONSULTANT

- Requirement Analysis
- System Architecture Design
- Technology Selection and Guidance
- Project Planning and Management
- Performance Optimization

