

Let's move safe

Embicon Industries Pvt. Ltd.

MATERIAL HANDLING SOLUTIONS

• INDUSTRIAL CRANE •



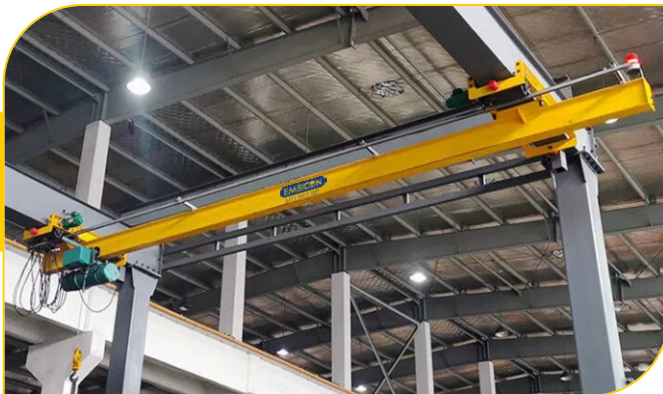
Single Girder Eot Crane

- Span Length : 3 to 30 Mtr
- Load Capacity : 0.5 to 10 Ton
- Lifting Height : 3 to 20 Mtr
- Lifting Speed : 3 to 6 M/min
- Travel Speed : 8 to 15 M/min
- Beam Type : I-Beam / Box Type



Double Girder Eot Crane

- Span Length : 4 to 40 Mtr
- Load Capacity : 5 to 40 Ton
- Lifting Height : 4 to 30 Mtr
- Lifting Speed : 3 to 6 M/min
- Travel Speed : 8 to 15 M/min
- Beam Type : I-Beam / Box Type



Under Slug Eot Crane

- Span Length : 3 to 7 Mtr
- Load Capacity : 0.5 to 10 Ton
- Lifting Height : 3 to 12 Mtr
- Lifting Speed : 3 to 6 M/min
- Travel Speed : 8 to 15 M/min
- Beam Type : I-Beam / Box Type



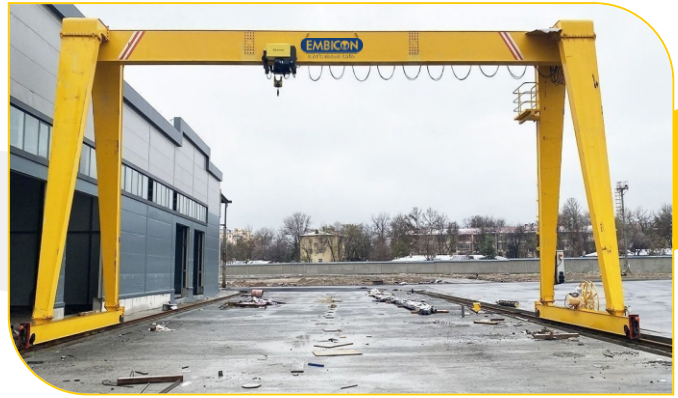
Semi Goliath Crane

- Span Length : 3 to 10 Mtr
- Load Capacity : 0.5 to 20 Ton
- Lifting Height : 3 to 15 Mtr
- Lifting Speed : 3 to 6 M/min
- Travel Speed : 8 to 15 M/min
- Beam Type : I-Beam / Box Type

• INDUSTRIAL CRANE •

Goliath / Gantry Crane

- Span Length : 3 to 30 Mtr
- Load Capacity : 3 to 20 Ton
- Lifting Height : 5 to 20 Mtr
- Lifting Speed : 3 to 6 M/min
- Travel Speed : 8 to 15 M/min
- Beam Type : I-Beam / Box Type



Jib Crane

- Span Length : 2 to 4 Mtr
- Load Capacity : 0.5 to 5 Ton
- Lifting Height : 3 to 15 Mtr
- Lifting Speed : 3 to 6 M/min
- Travel Speed : 6 to 12 M/min
- Design Type : Pillar / Wall Mount



End Carriage System

- Capacity : 0.5 To 40 Ton
- Design Type : Channel / Plate Fab.
- Material : EN8 / EN9
- Wheel Type : Open / L Block
- Wheel Size : 150 To 600 mm
- Mounting : Single / Double Girder



LT Gantry Girder

- Type : ISMB / Rails
- Design Type : Fabricated
- Material : Mild Steel
- I-Beam : ISMB 200 To 500
- Crane Rail : 30 To 120 Lbs
- Accessories : Rail Clamp, Sq. Bar



• HOIST & CRAB •



Wire Rope Hoist

- Load Capacity : 0.5 Ton To 10 Ton
- Class & Duty : II & Medium Duty
- Bottom Hook : IS 15560
- Gear Box : Helical Type
- Beam Type : Single Girder
- Operation : Electrical



Wire Rope Hoist Crab

- Load Capacity : 2 Ton To 40 Ton
- Class & Duty : II & Medium Duty
- Bottom Hook : IS 15560
- Gear Box : Helical Type
- Beam Type : Double Girder
- Operation : Electrical



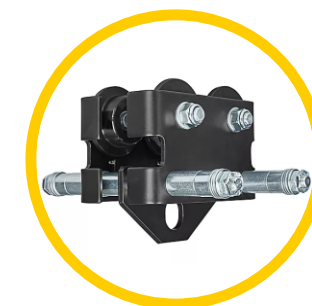
Electrical Chain Hoist



Chain Pulley Block



Gear Trolley

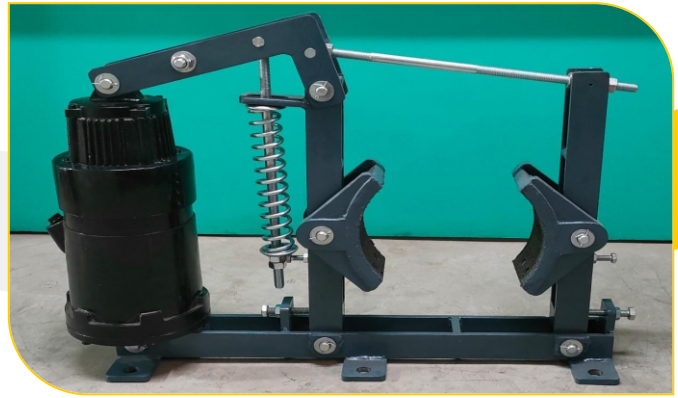


Push Pull Trolley

• CRANE BRAKE •

Thruster Brake

- Drum Dia. : 100 To 600 mm
- Thruster Type : 18 kg To 114 kg
- Thruster Stroke : 51 mm To 76 mm
- Material : MS / Cast Iron
- Braking Torque : 6 kg-m To 580 kg-m
- Power Supply : AC 415 V, 50 Hz

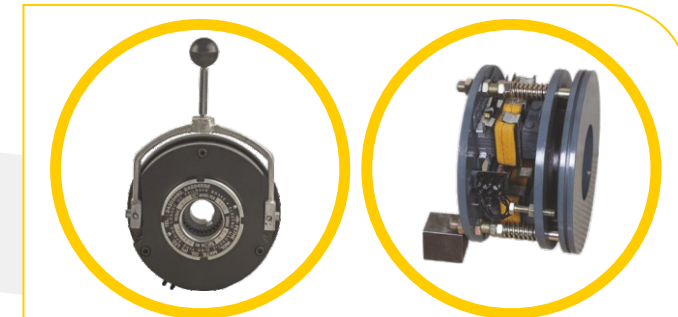


Electro Hydraulic Thruster

- Thruster Type : 18 kg To 295 kg
- Thruster Stroke : 51 mm To 127 mm
- Body Material : Cast Iron
- Rating : 90 To 580 Watt
- Oil Capacity : 2 To 9 Ltr., TR Oil
- Power Supply : AC 415 V, 50 Hz



AC Solenoid / SLDC Brake



EM / DISC Brake

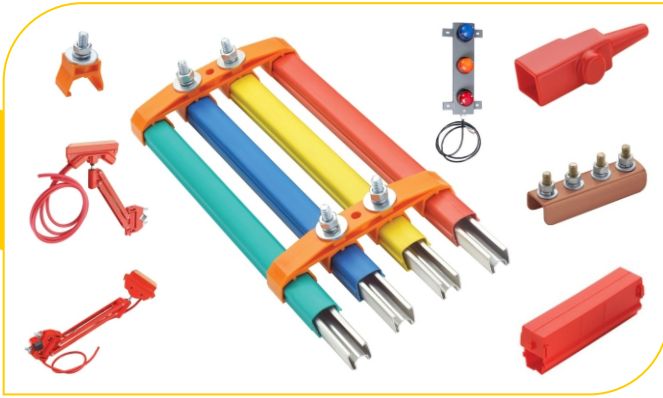


Brake Drum / Coupling



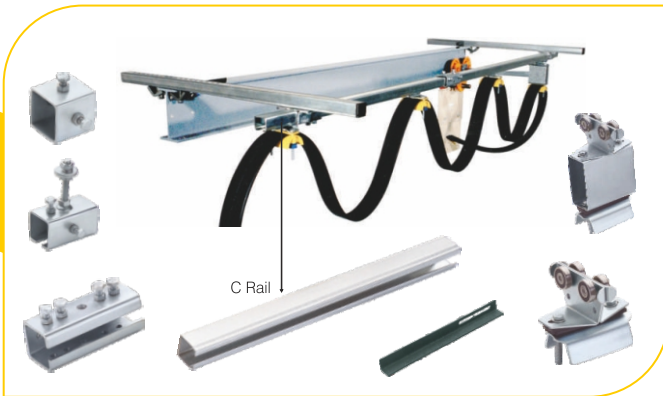
Brake Spare

• ELECTRIFICATION SYSTEM •



DSL Busbar System

- Capacity : 100 To 1200 Amp
- Design : Bolt / Pin Joint
- Material : GI / ALU / Copper
- Type : Straight / Radius
- Supply : Up To 415 V AC / DC
- Length : Standard 4.5 Mtr.



C Rail Festoon System

- Size : 30 X 32 mm
- Design : Bolt Joint
- Material : GI
- Type : Straight
- Cable Type : Round / Flat
- Length : Standard 4.5 Mtr.



Spring Operated Cable Reeling Drum



Motorised Cable Reeling Drum



Monospiral Cable Reeling Drum



Extension Type Cable Reel

• CONTROL EQUIPMENTS •



• Rotary Gear



• Lever Type



• Counter Weight

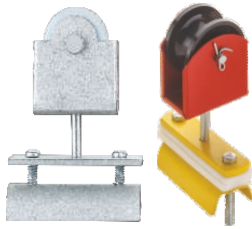


• Worm Drive

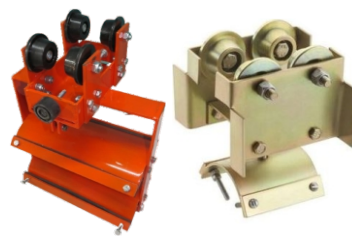
Crane Limit Switch



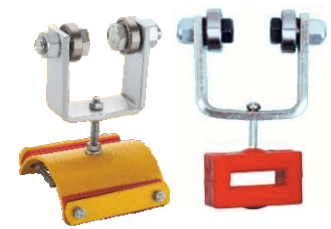
• PVC



• Metal

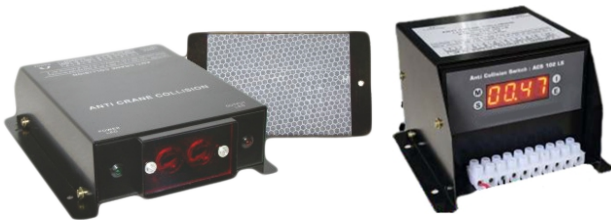


• I-Beam



• T-Section

Cable Carrier / Cable Trolley



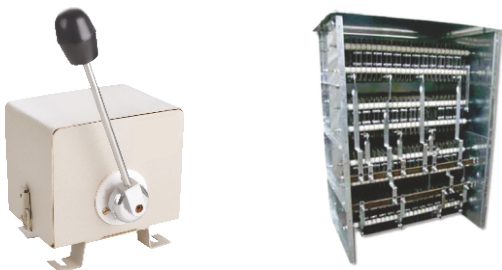
3 / 10 / 20 Mtr.
• One / Two Set Point • LED Display

Anti Collision Devices



Single / Double Speed
• Pendant Station • Wireless Radio Remote

Control Station



• Master Controller • Resistance Box

Motor Control



• VFD • Contactor

Control Panel

• EMBICON GROUP CLIENTS •

Govt. Sector



Energy Sector



Metal Sector



Chemical & Sugar Sector



Cement, Building & Mine Sector



Food & Process Industries Sector



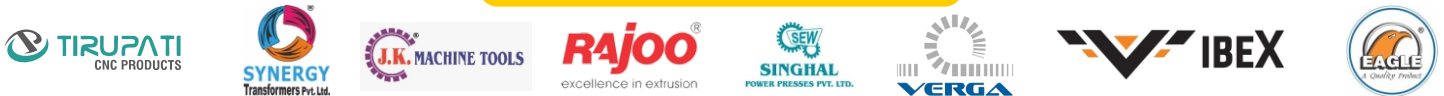
Port & Engineering Sector



Forge, Cast & Alloys Sector



CNC & Machine Sector



Embicon Industries Pvt. Ltd.

HO ADDRESS Shed No.1, Plot No.1, RK Industrial Area, 4-A Swati Park Main Road, Opp. Swati High Rise, Nr. Fortune Industries, Swati Park, Kothariya, Rajkot - 360004 (Guj.) India

FACTORY ADDRESS Plot No. 38, Survey No. 126, Shreeji Industrial Area, Nr. Ab Ferrocast, Piplana, Rajkot, Gujarat, India - 360030.

BRANCH
BARODA
HYDERABAD
PUNE

sales@embicon.in | www.embiconindustries.com | 99982 70747 / 93289 41547 / 93748 77348